



# 2024 System Accountability Plan

Ms. Emily Sikes, Interim Vice Chancellor for Academic & Student Affairs

September 18, 2024

[www.flbog.edu](http://www.flbog.edu)



Better Together.  
**Together, WE ARE #1.**

# Redefining Excellence

## 2024 System Accountability Plan



### Prioritizing Student Success

**62%**  
4-yr Grad Rate

---

**↑ 9pts**  
5-YR TREND



### Increasing Graduate Salaries

**\$50k**  
Median Salary

---

**↑ \$10k**  
5-YR TREND



### Innovative Research

**\$2.93B**  
Research Expenditures

---

**↑ \$658M**  
5-YR TREND

# 2025 Strategic Plan

## Performance Indicator Results



**32** total metrics in the 2025 Strategic Plan

**11**  
 goals met

**18**  
goals not met

← **8 are close**

- 1 metric without a goal
  - % of undergraduates engaged in research

- 2 metrics with data issues
  - Faculty awards
  - Quality online courses

# 2025 Strategic Plan

## 11 Goals Met



Goal Name	2024 Performance	2025 Goal
<b>Public University Ranking (Top 50 Rankings)</b>	<b>30</b>	<b>**</b>
<b>Median Wages of Bachelor's Graduates (Employed Full-Time 1 Year After Graduation)</b>	<b>\$50,000</b>	<b>\$43,200</b>
<b>Percentage of Bachelor's Degrees Awarded within Programs of Strategic Emphasis</b>	<b>59.8</b>	<b>50</b>
<b>Percentage of Graduate Degrees Awarded within Programs of Strategic Emphasis</b>	<b>64.9</b>	<b>60</b>
<b>Time to Degree for FTIC's in 120hr Programs</b>	<b>4.0</b>	<b>4.0</b>
<b>Percent of Baccalaureate Degrees Awarded Without Excess Hours</b>	<b>85</b>	<b>80</b>
<b>Pell Recipient Four-Year Graduation Rate</b>	<b>58</b>	<b>54</b>
<b>Graduate Degrees Awarded</b>	<b>29,597</b>	<b>27,400</b>
<b>Percent of Undergraduate FTE in Online Courses</b>	<b>43%</b>	<b>40%</b>
<b>Percent of Bachelor's Degrees in STEM &amp; Health</b>	<b>42</b>	<b>35</b>
<b>Percent of Graduate Degrees in STEM &amp; Health</b>	<b>51</b>	<b>50</b>

\*\* Public University Ranking Metric: 1 in Top 10 Liberal Arts, 1 in Top 10 Nation, 1 in Top 11-25 Nation, 2 in Top 25-50 Nation

# 2025 Strategic Plan

## 18 Unmet Goals



Goal Name	2024 Performance	2025 Goal
% of Bachelor's Grads Enrolled or Employed 1 Year After Graduation	73.8	80
FTIC 4-Year Graduation Rate	61.8	65
Academic Progress Rate (Second Fall Retention Rate, 2.0 GPA)	88.8	90
University Access Rate (% of Undergraduates with a Pell Grant)	10/12	12/12
FCS AA Transfer Three-Year Graduation Rate	61.5	62
Freshmen in Top 10% of High School Class	43	50
6-Year FTIC Graduation Rate	74	80
Bachelor's Degrees Awarded	71,668	78,500
% of Bachelor's Degrees Awarded to African-American & Hispanic Students	44	46
% of Adult Undergraduates Enrolled	12	21
Professional Licensure & Certification Exam First-time Pass Rates	8 below benchmarks	All above benchmarks
National Academy Memberships	71	75
Total Research Expenditures	2,929	3,000
Research Expenditures from External Sources	1,619	1,750
Utility Patents Awarded	395	410
Number of Licenses/Options Executed Annually	450	500
Number of Start-up Companies Created	28	60
Carnegie Foundation's Community Engagement Classification	8/12	12/12

# PBF 1: Percent of Bachelor's Enrolled or Employed (\$40,000+)\*



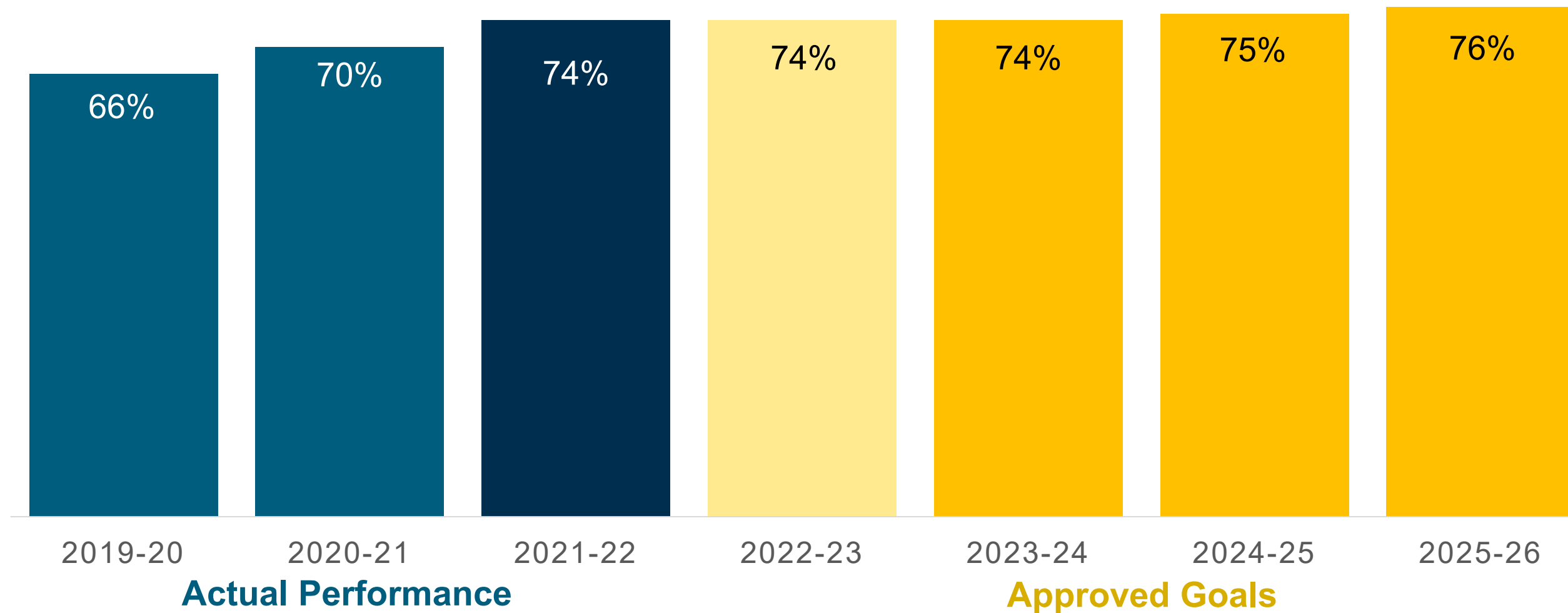
**System Rate** ↑ 4% pts • 1-Year Change

Remaining progress to goal: 6% points



Not on pace to meet 2025 goal

**2025 System Goal: 80%**



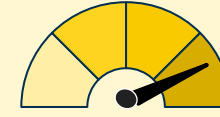
\*In November 2022, the Board's Budget and Finance Committee approved a change increase the wage threshold for graduates found employed from \$30,000 to \$40,000

# PBF 5: Academic Progress Rate



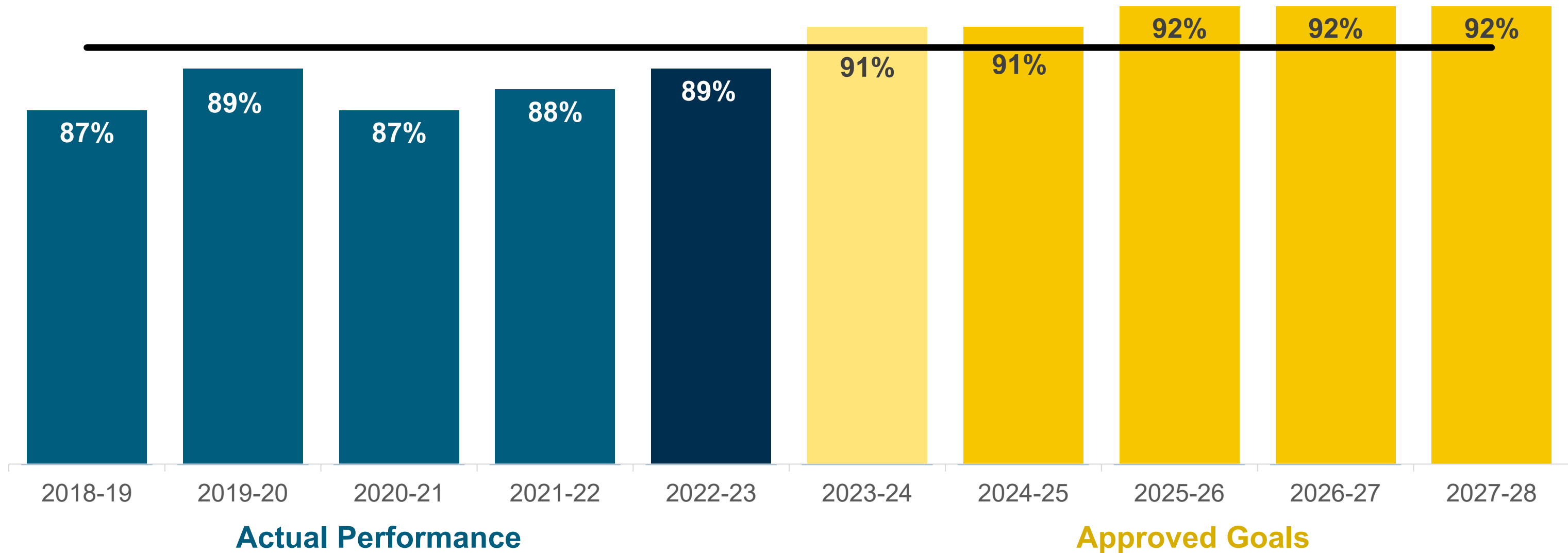
**System Rate** ↑ 2% pts • 5-Year Change

Remaining progress  
to goal: 1% points



**On pace to meet  
2025 goal**

**2025 System Goal: 90%**







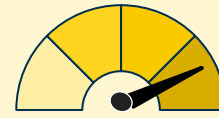
# PBF 4: FTIC 4-year Graduation Rate\*

**System Rate**



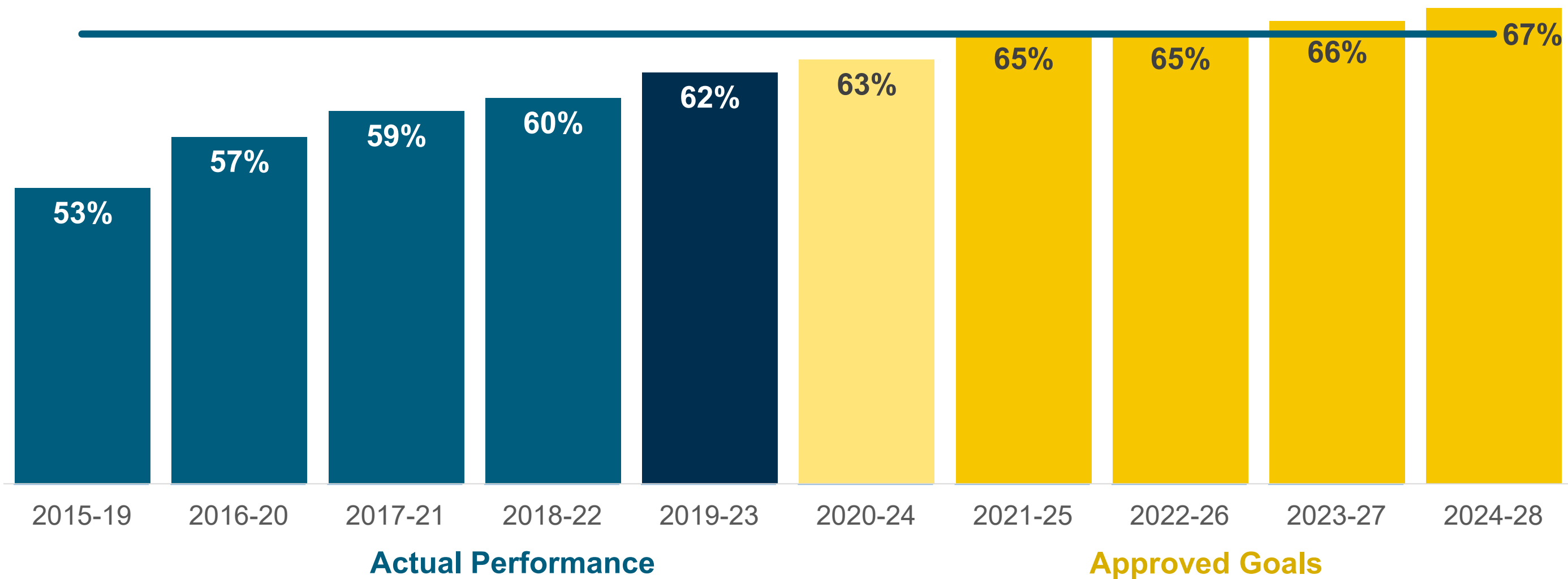
**9% pts** • 5-Year Change

Remaining progress to goal: **3% points**



**On pace to meet 2025 goal**

**2025 System Goal: 65%**



\*This metric was based only on FTICs who graduate from the same institution where they started; it doesn't include those who transferred & graduated from another SUS institution.



# KPI 7: Pell Recipient 4-year Graduation Rate

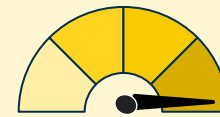


**System Rate**



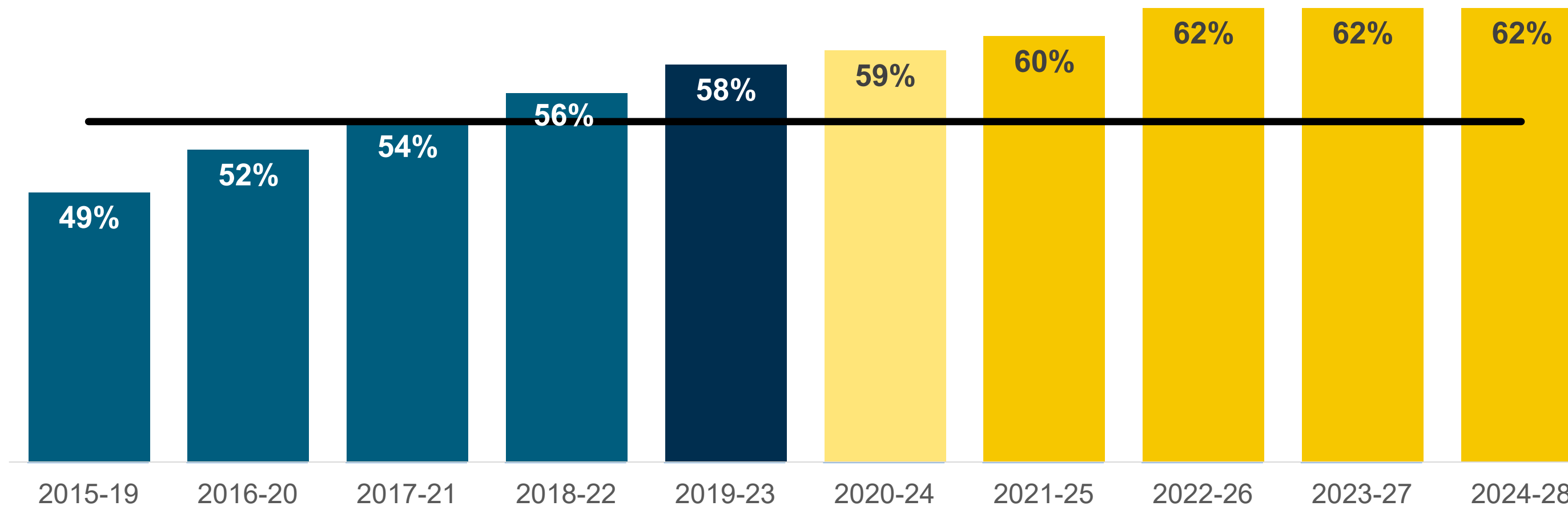
9% pts • 5-Year Change

Remaining progress  
to goal: **None**



**2025 Goal Met**

**2025 System Goal: 54%**



**Actual Performance**

**Approved Goals**

# PBF 9a: FCS AA Transfer 3-year Graduation Rate\*

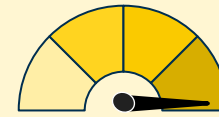


**System Rate**



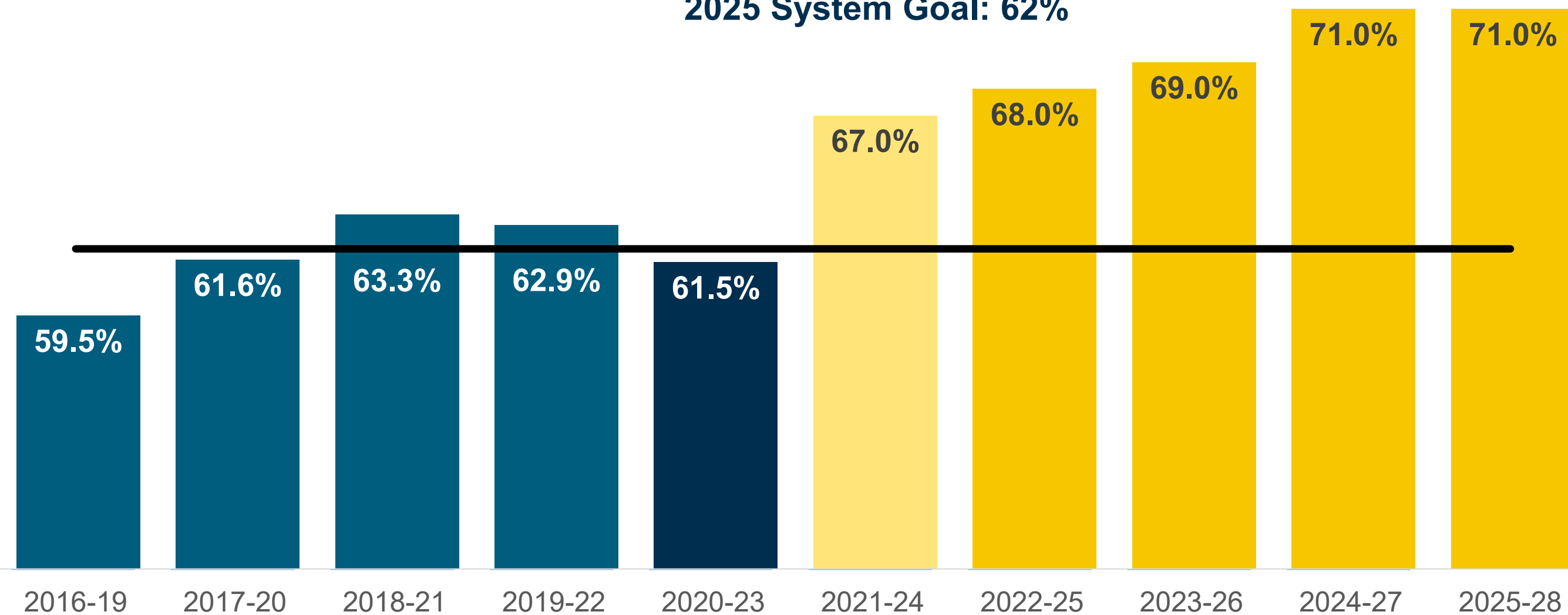
2% pts · 5-Year Change

Remaining progress to goal: .5%



On Pace to meet 2025 goal

**2025 System Goal: 62%**



**Actual Performance**

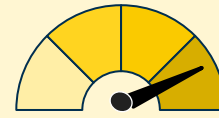
**Approved Goals**

# KPI 17: Total Research Expenditures (Millions)



**System Rate** ↑ \$658 M • 5-Year Change

Remaining progress to goal: \$80 M



On pace to meet 2025 goal

2025 System Goal: 3 Billion



# 2024 Summary



The State University System continues to redefine excellence



**Excellence in student success**

**89%**

retention rate

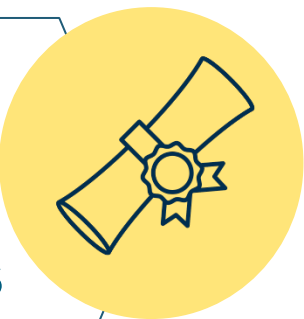
**62%**

4-yr grad rate



More than half of bachelor's degrees awarded in  
**Programs of Strategic Emphasis**

**Quality SUS degrees**  
produce strong post-graduation outcomes



**Over \$2.9 Billion**  
in total research expenditures





Better Together.  
**Together, WE ARE #1.**