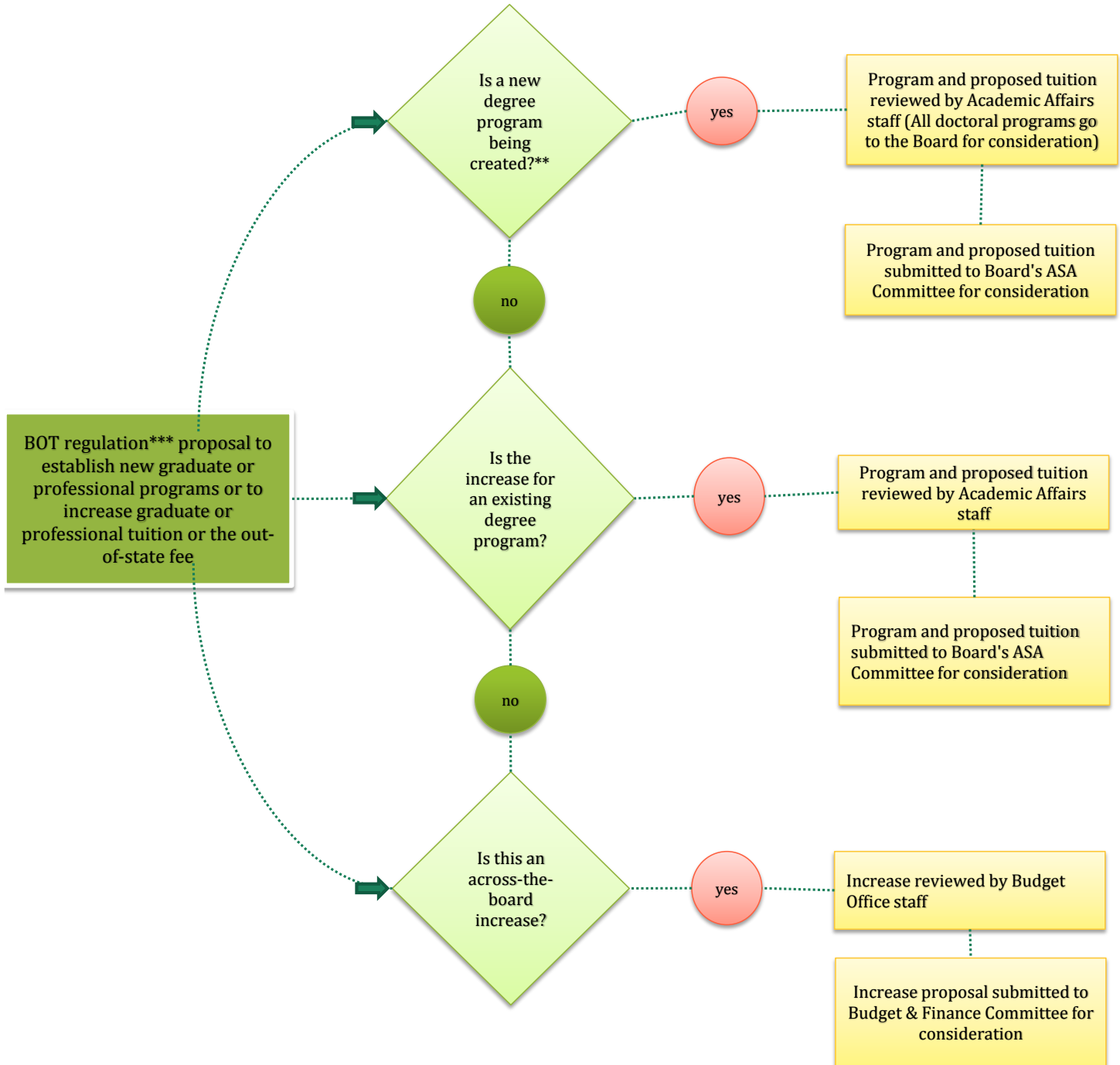


Increases to Graduate & Professional Tuition and Out-of-State Fees (excluding Market Tuition*)



* All market tuition increases will follow the process in Regulation 7.001.

** All new degree proposals will continue to follow the process described in Board Regulations 8.004 and 8.011, including the normal review process of the CAVP Academic Coordination Work Group.

*** BOT regulations regarding increases to tuition will not be considered by the Board until the Board has acted upon the proposed increase.

Other changes to the BOT tuition and fee regulations will follow the normal Select Regulation process.