



BOARD *of* GOVERNORS

State University System of Florida

University of North Florida

John A. Delaney, President
June 17, 2015

www.flbog.edu



University of North Florida 2015 Work Plan: Key Initiatives

Key Initiatives & Investments

1. Undergraduate Student Success

**High quality, high impact
educational experiences**



University of North Florida 2015 Work Plan: Key Initiatives

Undergraduate Student Success

Developing entry level programs to increase success in more difficult majors (e.g. sciences, engineering, accounting, etc.)

BIO-FLITE is a new seminar for biology majors which was tested with pre-med students in fall 2014

Pre-Med Students' Performance		
Improved Grade Performance and Persistence	2013 without BIO-FLITE	2014 BIO-FLITE Pilot Test
	Mean Grade Point Average	
General Biology 1	2.16	2.54
General Biology 2	2.11	3.0
Persistence	Continuing in Chosen Field	
	60%	76.5%

We have achieved similar results with our math boot camp for engineering students and in our writing labs



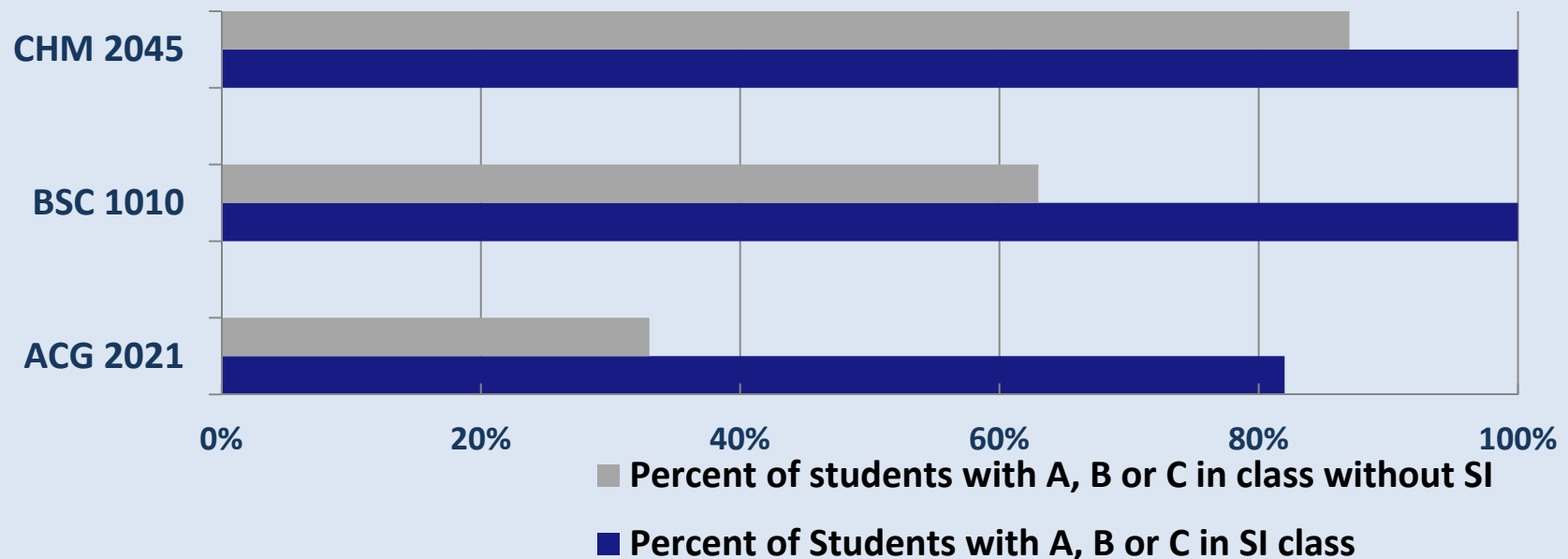
University of North Florida 2015 Work Plan: Key Initiatives

Undergraduate Student Success

Using supplemental instruction (SI) programs for more challenging courses

Began SI sessions for 7 courses enrolling 719 students in Spring 2015

Percent of Students Passing with and without SI in Three Different Courses



There will be 2,236 students enrolled in 20 courses with SI in Fall 2015



University of North Florida 2015 Work Plan: Key Initiatives

Undergraduate Student Success

Providing community-based experiential learning activities for students to enhance post-graduate employment and graduate study opportunities. These activities include career-based internships, faculty-mentored research, community-based research projects, and other such opportunities.

Academic Year	Percent of students engaged in Experiential Learning
2011-2012	25%
2012-2013	35%
2013-2014	37%
2014-2015	37%

We're also working to increase retention by adding research scholarships for top performing students allowing them to work with faculty mentors for 4 years.

\$3,000 per year awards for first cohort.

Student profile: GPA 4.44; Combined math and verbal SAT 1396



University of North Florida 2015 Work Plan: Key Initiatives

Undergraduate Student Success

Improved advising and academic support services.

Restructuring advising to connect lower-division students to their chosen major.

Increased emphasis on communication and interventions with students relating to degree completion.

A new Library Learning Commons

Tutoring now offered in residence halls



University of North Florida 2015 Work Plan: Key Initiatives

Undergraduate Student Success

UNF FTIC 6-year graduation rates

2004-2010	46%
2005-2011	49%
2006-2012	47%
2007-2013	48%
2008-2014	55%



University of North Florida 2015 Work Plan: Key Initiatives

Key Initiatives & Investments

2. Programs of Excellence and Relevance

**A focus on areas of strength
that correspond to regional needs**



University of North Florida 2015 Work Plan: Key Initiatives

Programs of Excellence and Relevance

Multidisciplinary programs in areas matching regional needs

- ★ Health & Biomedical Science
- ★ Commerce
- ★ Advanced Manufacturing & Materials Innovation
- ★ Coastal Science & Engineering

Closely aligned with the BOG Programs of Strategic Emphasis, these are areas where we are focusing resources as we build and expand a responsive curriculum

Recently Approved

B.S. in Radiology
Doctorate in Clinical Nutrition
M.S. in Coastal & Port Engineering

Under Consideration

B.S. in Medical Laboratory Science
B.S. in Exercise Physiology
B.S. in Coastal Environmental Science



University of North Florida

2015 Work Plan: Key Initiatives

Programs of Excellence and Relevance

Internal programming has been created to cultivate multidisciplinary research including research in areas of excellence and relevance.

Some of our corporate research partners

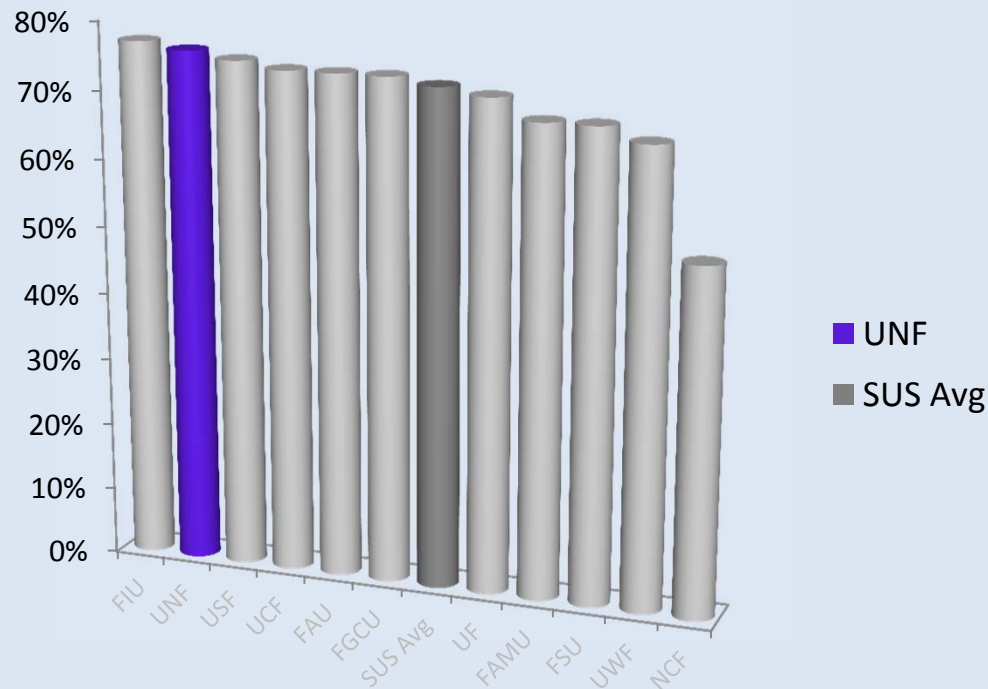
- ★ Vistakon (J&J Vision Care)
- ★ Brooks Rehabilitation System of Care
- ★ Mayo Clinic, Jacksonville
- ★ Boeing
- ★ Goodrich
- ★ Bonar Engineering and Construction
- ★ Black Knight Financial
- ★ Embraer

One example of funded multidisciplinary research: engineering and physical therapy students working together to modify toys for children with motor disabilities.



University of North Florida 2015 Work Plan: Key Initiatives

Programs of Excellence and Relevance



Second highest ranked university for bachelor's graduates employed or continuing their education across the U.S. (BOG)
Highest percent of bachelor's graduates employed in Florida (FETPIP)



University of North Florida 2015 Work Plan: Key Initiatives

Key Initiatives & Investments

3. Distance and Blended Learning:

A complement to UNF's traditional course delivery, expanded certificate and degree program offerings.



University of North Florida 2015 Work Plan: Key Initiatives

Distance and Blended Learning:

Increasing the infrastructure for more asynchronous learning and professional development for faculty on the effective use of blended learning, which works well with our students

Delivering fully online programs using accelerated courses (e.g., 7 or 8 week courses), allowing multiple start times each year.

Some of these online programs are offered in partnership with private organizations and some are offered internally as a regular course offerings.

Developing distance learning that meets our students' needs and/or fills a unique niche.



University of North Florida 2015 Work Plan: Key Initiatives

Distance and Blended Learning:

Growth in online offerings	2010-11 ACTUAL	2011-12 ACTUAL	2012-13 ACTUAL	2013-14 ACTUAL	2014-15 ACTUAL	2015-16 ACTUAL	2016-17 GOAL
Percent of Course Sections Offered via Distance and Blended Learning	4%	5%	7%	9%	11%	13%	14%

In 2015 UNF ranked 4th in Florida for best online college offerings by AffordableCollegesOnline.org



University of North Florida 2015 Work Plan: Enrollment

Planned Enrollment Growth

HEADCOUNT	FALL 2014 ACTUAL	FALL 2015 GOAL	FALL 2016 GOAL	FALL 2017 GOAL
UNDERGRADUATE	13,429	13,430	13,643	13,739
GRADUATE	1,785	1,783	1,809	1,827
HS DUAL ENROLLED	39	46	55	71
OTHER UNCLASSIFIED	934	974	992	994
TOTAL	16,187	16,233	16,499	16,631

Distance Learning as a Percentage of Total Enrollment

FULL-TIME EQUIVALENT (FTE)	2013-14	2014-15	2015-16	2016-17
UNDERGRADUATE	11.3%	13.8%	15.9%	17.6%
GRADUATE	14.3%	16.2%	17.8%	18.6%
TOTAL	11.5%	14.1%	16.1%	17.7%

Note: Distance Learning is a course in which at least 80 percent of the direct instruction of the course is delivered using some form of technology when the student and instructor are separated by time or space, or both (per 1009.24(17), F.S.).



University of North Florida 2015 Work Plan: New Programs

New Programs For Consideration by University in AY 2015-16

PROGRAM TITLES	AREA OF STRATEGIC EMPHASIS	# OF OTHER SUS UNIVERSITIES WITH SAME PROGRAM	OFFERED ONLINE
BACHELOR'S PROGRAMS			
BAE in Deaf Education	Education		Y
BS in Medical Lab Sciences	Health	FGCU, UCF, USFT, UWF	No
BS in Exercise Physiology	STEM	FAU, FGCU	No
MASTER'S PROGRAMS			
MSW Social Work	(High local demand)	FAMU, FAU, FGCU, FIU, FSU, UCF, USF, UWF	No
Ed.S in Educational Leadership		FAU, FIU, FSU, UCF, UF, USFT, UWF	No
MS in Higher Education Administration		FIU, FSU	TBD
DOCTORAL PROGRAMS			
DNP in Nurse Anesthetist	Health	FIU	No



University of North Florida 2015 Work Plan: Performance Funding

Performance Based Funding Metric Goals

METRICS	2015 ACTUAL	2016 GOALS	2017 GOALS	2018 GOALS	2019 GOALS
Percent of Bachelor's Graduates Employed Full-time or Continuing their Education in the U.S. One Year After Graduation	76%	78%	80%	81%	82%
Median Wages of Bachelor's Graduates Employed Full-time in Florida One-Year After Graduation	\$34,700	\$35,200	\$35,700	\$36,200	\$36,700
Average Cost per Bachelor's Degree [Instructional Costs to the University]	\$30,750	\$29,350	\$28,850	\$28,350	\$27,850
FTIC 6 year Graduation Rate [Includes full- and part-time students]	55%	57%	59%	60%	61%
Academic Progress Rate [FTIC 2 year Retention Rate with GPA>2]	78%	80%	81%	82%	83%
University Access Rate [Percent of Fall Undergraduates with a Pell grant]	33%	36%	37%	38%	39%
Bachelor's Degrees Awarded Within Programs of Strategic Emphasis	45%	46%	47%	48%	49%
Graduate Degrees Awarded Within Programs of Strategic Emphasis	50%	52%	54%	55%	56%
Board of Governors Choice Metric Percent of Bachelor's Degrees without Excess Hours	71%	73%	74%	75%	76%
Board of Trustees Choice Metric Percent of Sections Offered Via Distance and Blended Learning	11%	13%	14%	15%	16%

■ increased improvement or excellence score



University of North Florida 2015 Work Plan: Performance Indicators

Other Key Performance Indicators

COMMON TO ALL	2015 ACTUAL	2016 GOALS	2017 GOALS	2018 GOALS	2019 GOALS
Time To Degree	4.6	4.3	4.2	4.1	4.0
SAT Score [For 3 Subtests]	1,791	1,801	1,808	1,814	1,820
Freshman Retention Rate	82%	83%	84%	85%	86%
Research Or Institution-specific	2015 ACTUAL	2016 GOALS	2017 GOALS	2018 GOALS	2019 GOALS
Freshmen In Top 10% of Graduating High School Class	21%	23%	25%	27%	29%
Percent of Course Sections Offered via Distance and Blended Learning	13%	14%	15%	16%	17%
Bachelor's Degrees in Areas of Strategic Emphasis	46%	47%	48%	49%	50%



BOARD *of* GOVERNORS

State University System of Florida

www.flbog.edu