

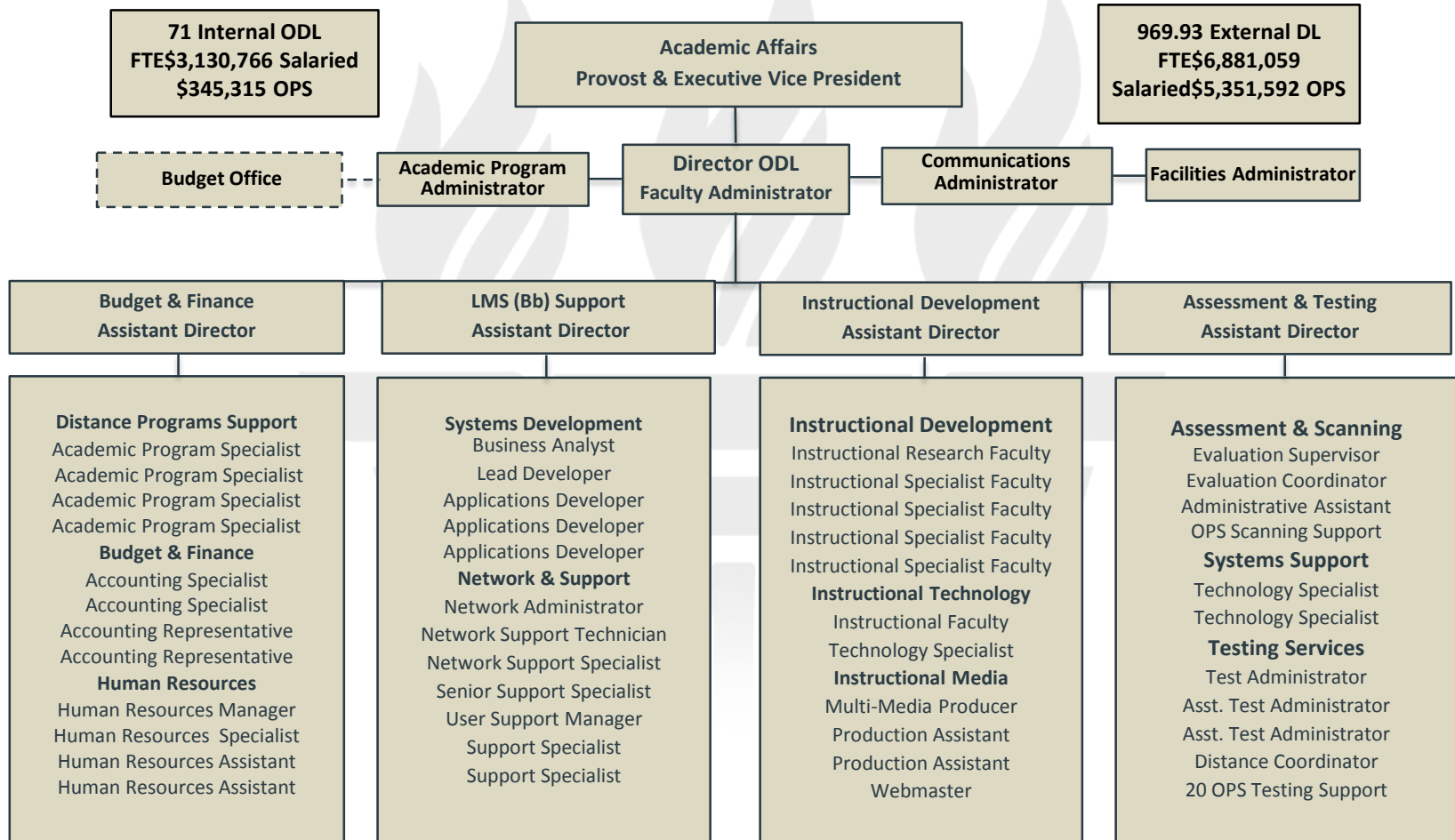
Distance Learning at FSU

Dr. Sally McRorie

Provost and Executive Vice President for Academic Affairs
Florida State University

<http://Distance.fsu.edu>

2014/15 Distance Learning Staffing 1,041 FTE



Distance Learning FTE*

	Actual 2010-11	Actual 2014-15	Planned 2018-19	Planned 2021-22
Undergraduate				
State Fundable	640.85	2245.22	**	**
Non-State Fundable	N/A	361.75	**	**
Total	640.85	2606.97	4,067	4,589
Graduate				
State Fundable	381.81	450.03	**	**
Non-State Fundable	N/A	225.56	**	**
Total	381.81	675.59	938	1,125
<p>* The Florida definition of FTE, which divides undergraduate credit hours by 40 and graduate credit hours by 32. ** Will fluctuate based on availability of funds and course demand</p>				

Unique DL Space Requirements

- ✓ Accessible Computer Labs.
- ✓ Additional High-tech Classrooms.
- ✓ Increased Onsite Proctored Testing.
- ✓ More Virtual and Digital Library Resources.
- ✓ Expanded Special Needs Accessibility
- ✓ Space for student Labs and Group Projects

Distance Learning Enrollments and Space

- ✓ 90% of DL courses are taught from central campus classrooms, labs, studios, or faculty offices.
- ✓ Facility funding supports high-tech multi-purpose classrooms and studios that accommodate FTF *and* DL instruction.
- ✓ At a primarily residential campus, DL instruction only marginally decreases the space needs of the institution because of the need to accommodate student groups, testing, student academic support and course management.
- ✓ Most DL courses require proctored testing on and off-site (currently 660 domestic and international sites) in addition to the main campus Testing Center. DL exams constitute 60% of Testing Center usage.

Goals & Resources for Growth

- ✓ Support growth with DL fees and E&G allocations.
- ✓ Support new technology with Tech and Facility fees.
- ✓ Fund tech-enabled classrooms and self-service studios.
- ✓ Expand DL student services to improve student success.
- ✓ Secure private funding for innovative DL instruction.

