


BOARD of GOVERNORS

State University System of Florida

Accountability Framework

Budget & Finance Committee
November 8, 2012

www.flbog.edu



Building a Better System

2010 - Regulations updated to align with the Governance Agreement

- Provided greater flexibilities to universities over certain fees
- Further clarified roles and responsibilities of Board of Governors and Boards of Trustees

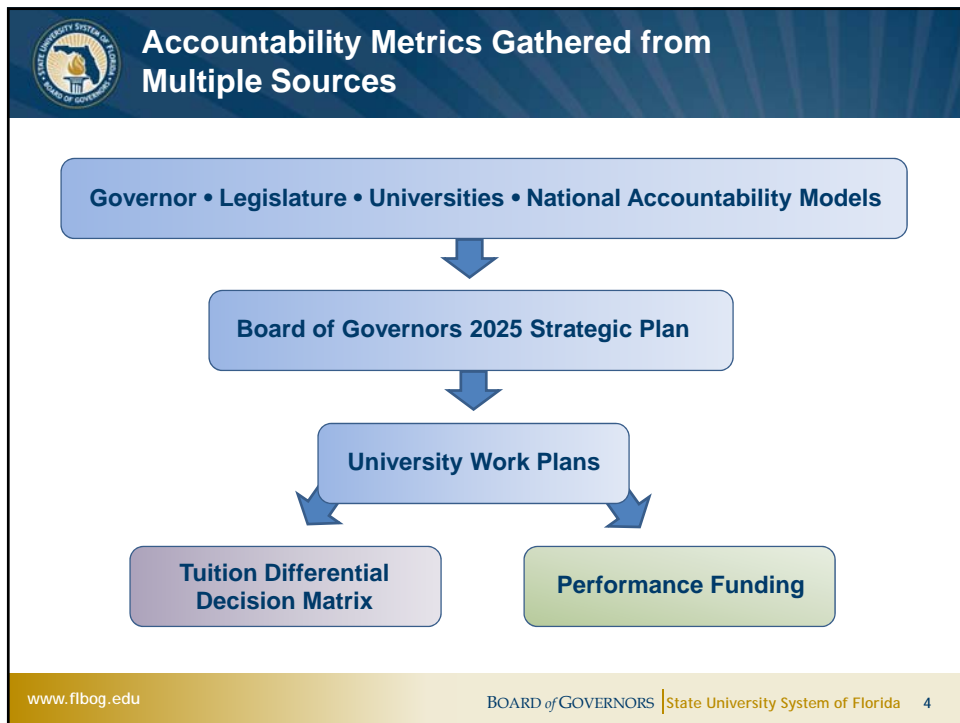
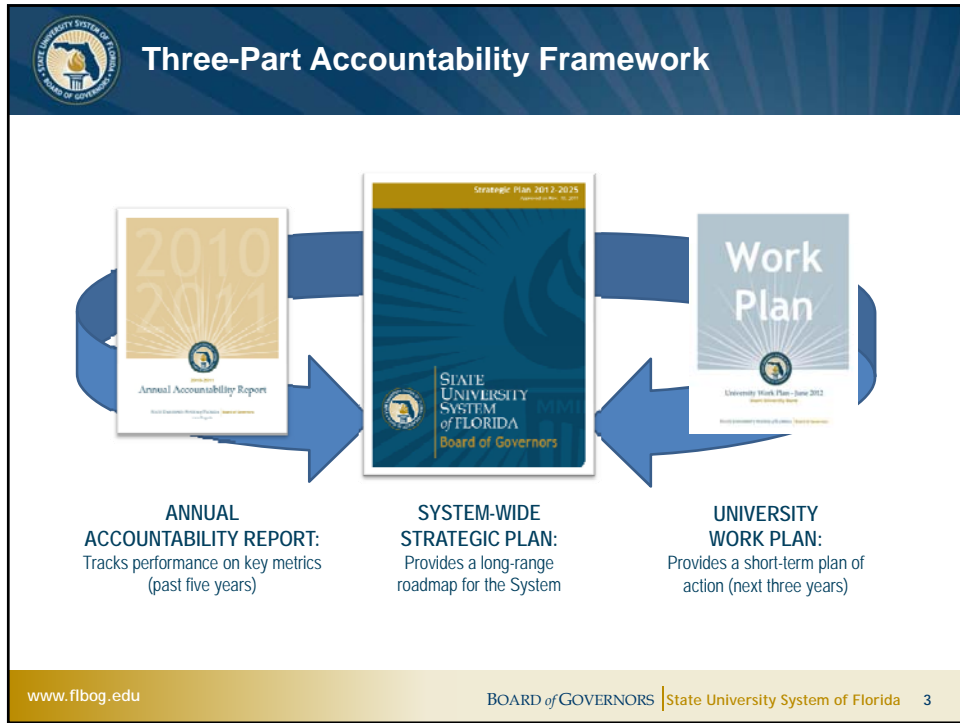
2011 - Regulations updated to align with new legislative authority


- Provided greater flexibilities to universities over market-rate and block tuition options

2012 - Regulations updated to enhance accountability and system collaboration

- Provided greater clarity regarding the opening and closing of campuses
- Created "rules of the road" when universities propose programs in other geographic areas
- Established processes for new degree program vetting to reduce unnecessary duplication and ensure the System is meeting the State's needs

www.flbog.edu BOARD of GOVERNORS | State University System of Florida 2





Tuition Differential Metrics

Metrics used to evaluate both Excellence and Improvement will guide the Board's decision on potential tuition differential increases:

STANDARD METRICS:


- Retention Rates
- Graduation Rates
- Post-Graduation Success (Employment, Average Salary, Continued Education)
- Excess Hours
- Bachelor's Degrees in Areas of Strategic Emphasis
- Access Rate (Financial Aid)

+

MISSION-DRIVEN METRICS:

- 1 Institution-Specific Metric (Board Choice)
- 1 Institution-Specific Metric (University Choice)
- Performance on All Other Metrics
- Budget & Finance Committee Discretion

www.flbog.edu
BOARD of GOVERNORS | State University System of Florida
5



Performance Funding

Metrics used to evaluate both Excellence and Improvement are tied to the goals outlined in each university work plan:

STANDARD METRICS:

- Retention Rates
- Graduation Rates
- Post-Graduation Success (Employment, Average Salary, Continued Education)
- Excess Hours
- Bachelor's Degrees in Areas of Strategic Emphasis
- Master's Degrees in Areas of Strategic Emphasis
- Access Rate (Financial Aid)

+

MISSION-DRIVEN METRICS:

- 2 Institution-Specific Metric (Board Choice)
- 2 Institution-Specific Metric (University Choice)
- Research Expenditures
- Doctoral Degrees in STEM
- Budget & Finance Committee Discretion (e.g. Affordability, ROI)

www.flbog.edu
BOARD of GOVERNORS | State University System of Florida
6