




University of Florida

# Universal Tracking



University of Florida

## Precursor to Universal Tracking


- Monitoring Academic Progress Policy (MAPP) 1992-1996
  - Replaced 80 hour rule
  - Student initially classified in the College of Liberal Arts and Sciences, regardless of their intended major
  - Monitored student progress at 30, 45 and 60 hours earned
  - Student does not meet criteria for intended major at 30 or 45 credit hours earned
    - Must see an advisor in the Academic Advising Center
  - Student does not meet criteria at 60 credit hours earned
    - Must either get conditionally admitted to the college of their intended major or admitted to a major in a different college



University of Florida

## Universal Tracking

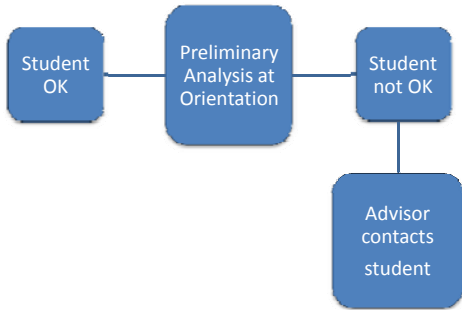
- First pilot run in Fall 1996
- Development of 8 semester plan for each major included in the catalog
- Critical tracking criteria established within the first five semesters
- Student admitted directly into major from the first semester
- Provost office guaranteed sufficient course offerings in Tracking courses
- Universal Tracking audit is separate from the degree/graduation audit
- Analysis only runs Fall and Spring semesters, allowing off track students to use summer coursework to “catch up”
- Process utilizes existing IT infrastructure and personnel
- Approximately 20,000 undergraduate students are evaluated for each Universal Tracking semester
- Approximately 20% of these students are evaluated off track



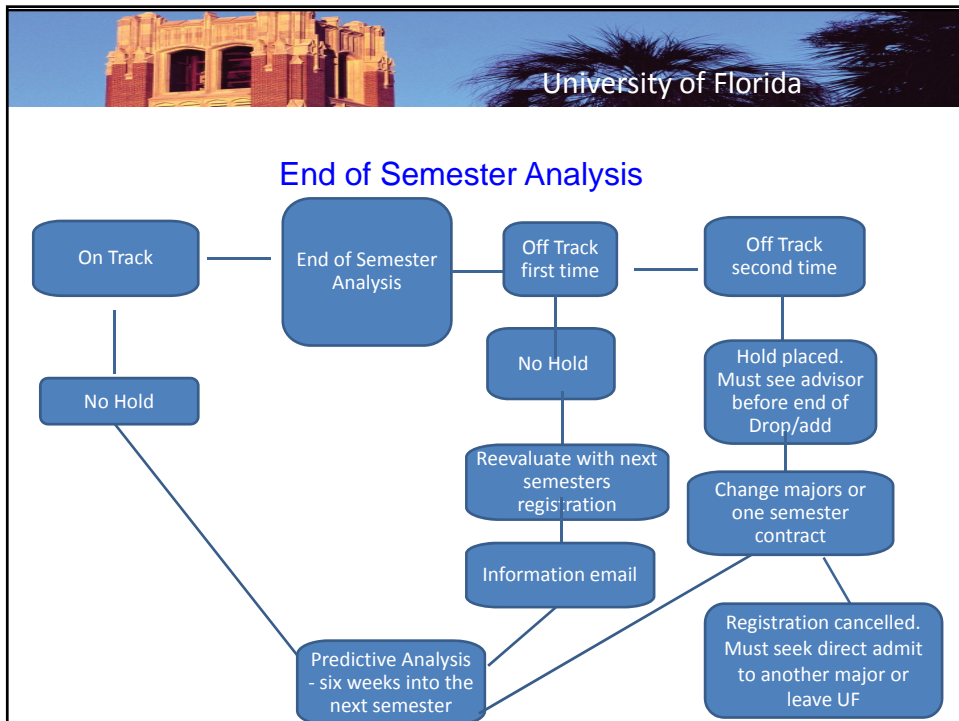
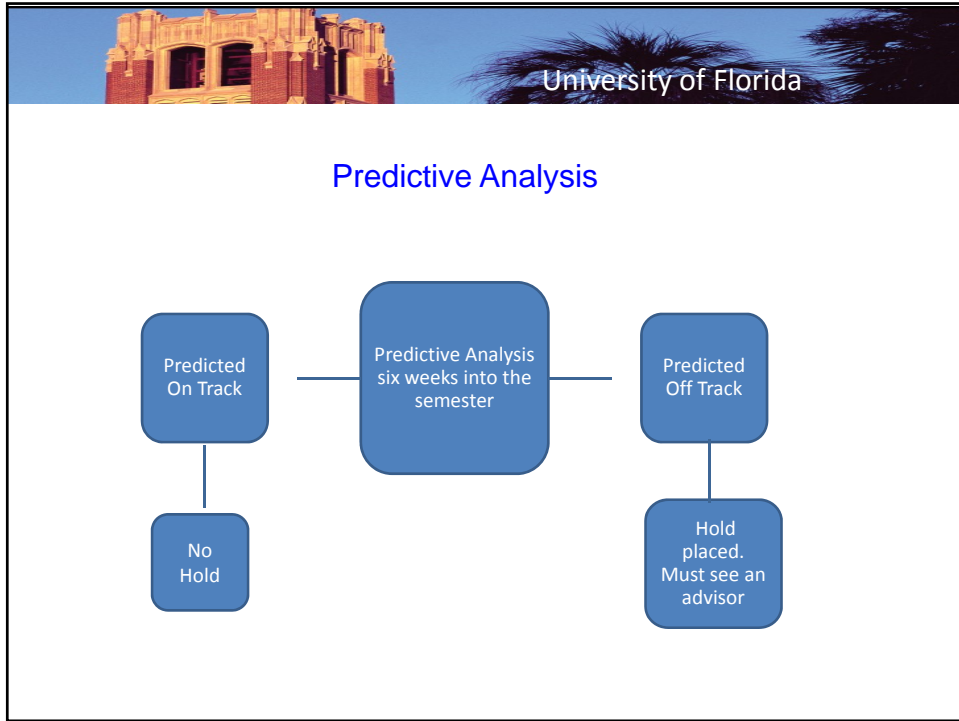
University of Florida


## Preview Analysis

- Goal - all incoming students evaluated on track at first semester




```
graph LR; A[Student OK] --- B[Preliminary Analysis at Orientation]; B --- C[Student not OK]; C --- D[Advisor contacts student];
```



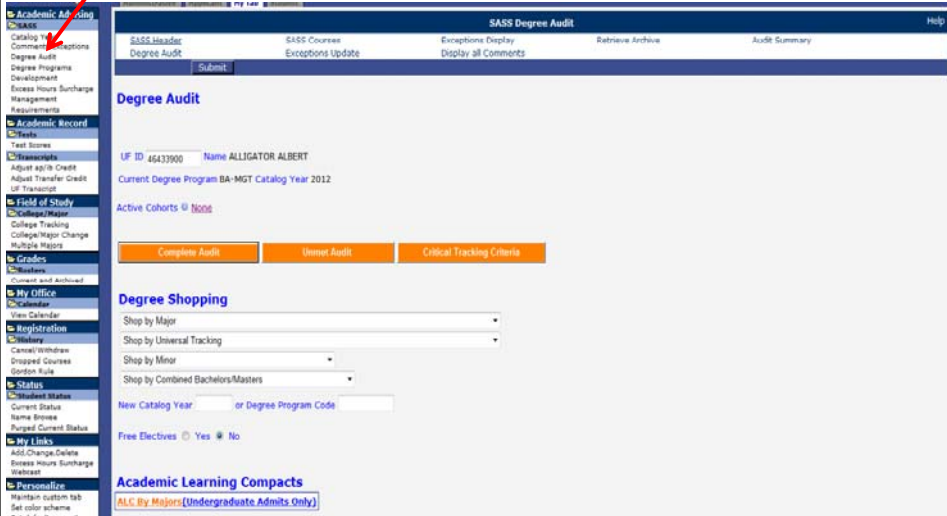


## Using the Universal Tracking System


- Advisors and faculty use ISIS Admin, an online web facility
  - View Universal Tracking audit
  - View Degree/Graduation audit
  - Training is minimal and in most cases self evident
- Students use ISIS, an online web facility
  - View Universal Tracking audit
  - View Degree/Graduation audit
  - Training is done in the First Year Florida course and Preview/Orientation
- College staff member is designated to maintain the Universal Tracking audit for each major
  - Training is done by the SASS coordinator in the Provost Office
  - Changes are tested, reviewed and approved by the SASS coordinator before moving to the live file



## ISIS Admin for Faculty and Staff



The screenshot displays the ISIS Admin interface. On the left is a navigation sidebar with categories like 'Academic Auditing', 'Academic Record', 'Field of Study', 'Grades', 'My Office', 'Status', and 'My Links'. A red arrow points to the 'Academic Auditing' menu. The main content area is titled 'SASS Degree Audit' and includes a 'Degree Audit' section with a 'Submit' button. Below that is a 'Degree Shopping' section with dropdown menus for 'Shop by Major', 'Shop by Universal Tracking', and 'Shop by Minor'. There are also input fields for 'New Catalog Year' and 'Degree Program Code', and a 'Free Electives' checkbox. At the bottom, there is a section for 'Academic Learning Compacts' with a link for 'ALC By Majors (Undergraduate Admits Only)'.



## University of Florida

### ISIS for Students

**My Online Services**

- Transcripts
- My Record
- Placement
- Degree Audit**
- Degree Audit
- Degree Shopping
- Excess Hours
- Surcharge
- Tracking Audit
- Learning
- Evaluations
- Financial Aid
- Financial Services
- Registration
- Transcript Request
- Current Students
- Former Students
- Pending Requests
- Completed Requests
- FAQ

**DEGREE AUDIT**

Log out

---

**Personal Information**

**Degree Audit Information**

**NOTE: Course adds or drops are not reflected in your audit immediately. These transactions will not show in your audit for up to one business day.**

**Tracking Audit**

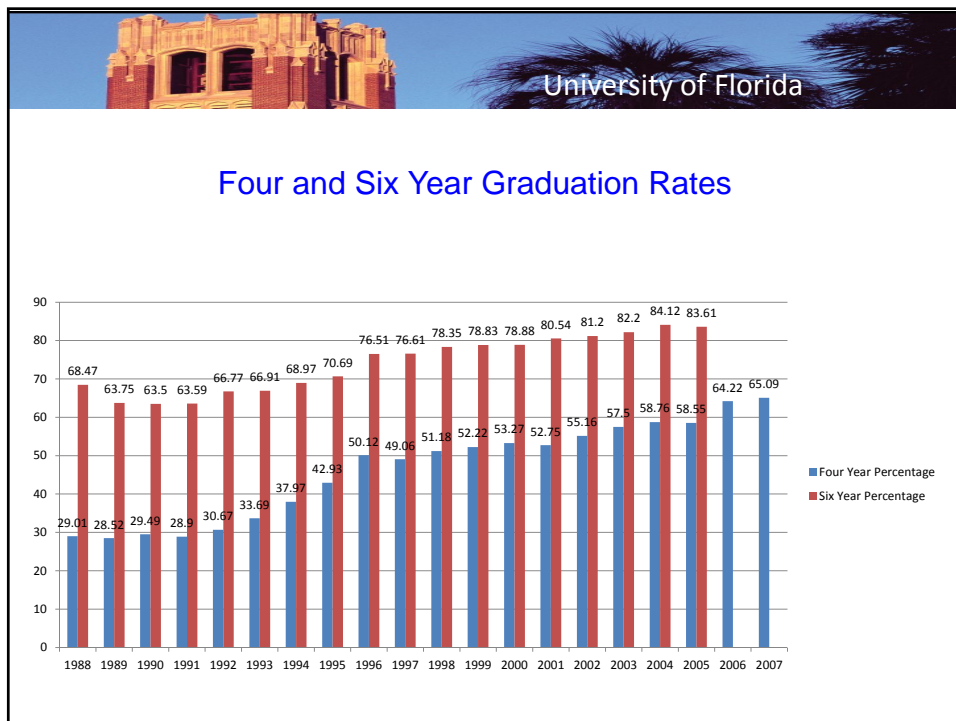
- View Critical Tracking Audit
- Degree Audits
- View Unmet Requirements
- View Complete Degree Audit
- Excess Hours Surcharge
- View Your Excess Hour Surcharge Counter
- What's My Excess Hour Surcharge
- Appeals and Deadlines
- FAQ's

**Degree Shopping**

- Shop by Subject Area
- Shop by College
- Shop by Major
- Shop by Minor
- Shop by Critical Tracking Criteria
- Combined Degree Programs
- Combined Bachelors/Masters

**My Resources**

- Academic Info
- Academic Learning
- Compacts, by Major
- Alcohol Education
- Tutorial
- Calendar/Deadlines
- Catalog - Undergrad
- Combined Degrees
- Course Evaluations
- Distance Ed Courses
- Exam Schedules
- Forms - Registrar
- Prestigious National Scholarships
- Schedule of Courses
- Study Abroad Ops
- Upgrad Experience
- Advising Info
- Academic Advising
- Major - Changing A
- Placement Testing
- Financial Info
- Grad Student Info
- Personal Info
- Other Info
- Frequently Asked Questions





University of Florida

# Thank you!

If you have additional questions, please feel free to contact :

Dr. Bernard Mair  
Associate Provost for Undergraduate Affairs  
352 846-1761  
[bamair@ufl.edu](mailto:bamair@ufl.edu)

Roxanne Barnett  
Student Academic Support Systems Coordinator  
352 846-2036  
[rbarnett@ufl.edu](mailto:rbarnett@ufl.edu)

Toby Shorey  
Director of Curriculum Monitoring and Analysis  
352 273-0999  
[tshorey@ufl.edu](mailto:tshorey@ufl.edu)